

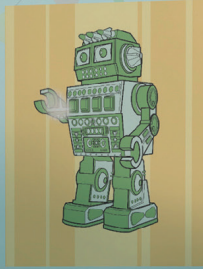
ViewSonic® | Education

ViewBoard® Interactive Displays

Newly upgraded ViewSonic® IFP50 Series



Robotics



How do Robots move?

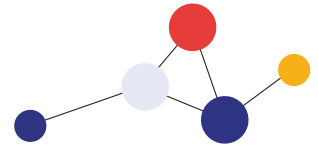
Gears are mechanical parts teeth. They are used to send or receive force and motion.

Also called cogs.

Robotics Gears : transfer rotational forces



How you think a robot moves

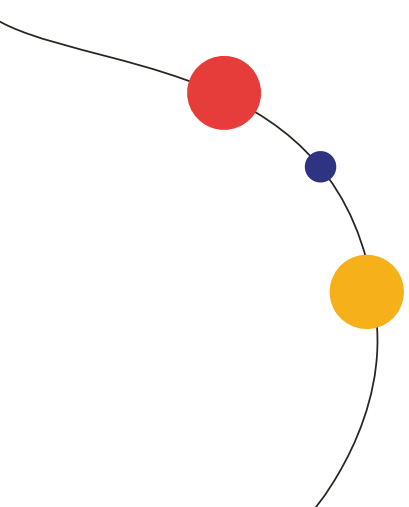


Limitless Collaboration and Endless Creativity


Connect. Collaborate. Create.

Designed to help classrooms connect, collaborate and create, the newly upgraded IFP50 series of interactive displays delivers exactly what you need to drive engagement, energize and motivate students, and make teaching more fun.

Featuring state-of-the-art touch display technology, ViewBoard interactive displays deliver an ultra-smooth, natural handwriting experience. With stunning 4K resolution, upgradeable slot-in PC options, and secure myViewBoard® software, these interactive displays offer a customizable, secure, and future-proof whiteboarding solution for any classroom or huddle space.



ViewSonic myViewboard® software is a powerful tool that enables teachers to build dynamic lesson plans, import engaging content, and share lessons with students.

Whether yours is a Windows, Android, Mac or Chrome environment, myViewBoard works well with existing technology and seamlessly integrates into nearly any classroom. 



- **myViewBoard:** A digital whiteboard designed to run on all operating systems. It's ideal for use on large touchscreen displays, but will also run on non-interactive screens such as a laptop screen, where mouse clicks replace touch for interaction.



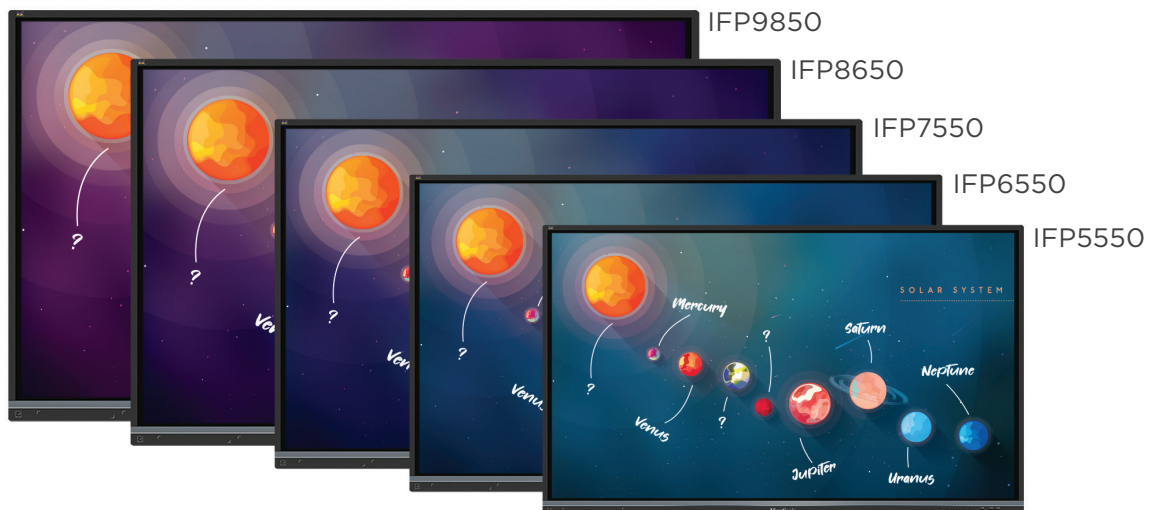
Manager

- **Manager:** The included Manager™ software enables IT admin to securely setup, manage and maintain all of your school's digital displays from a centralized dashboard.



Classroom

- **Classroom:** Classroom is an online teaching tool packed with a variety of features to help you effortlessly create and manage a classroom environment in the digital space that connects you to your students wherever they may be.



ViewBoard Cast enables content streaming from any device onto a ViewSonic display over wireless or cable networks.



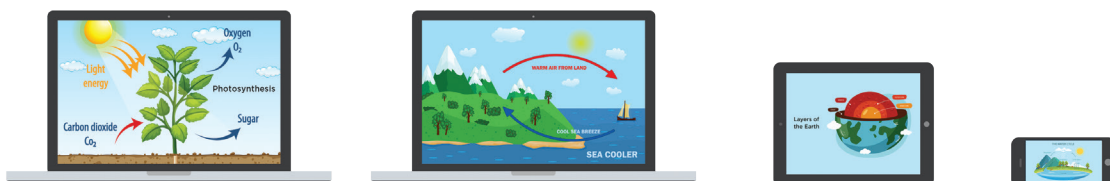
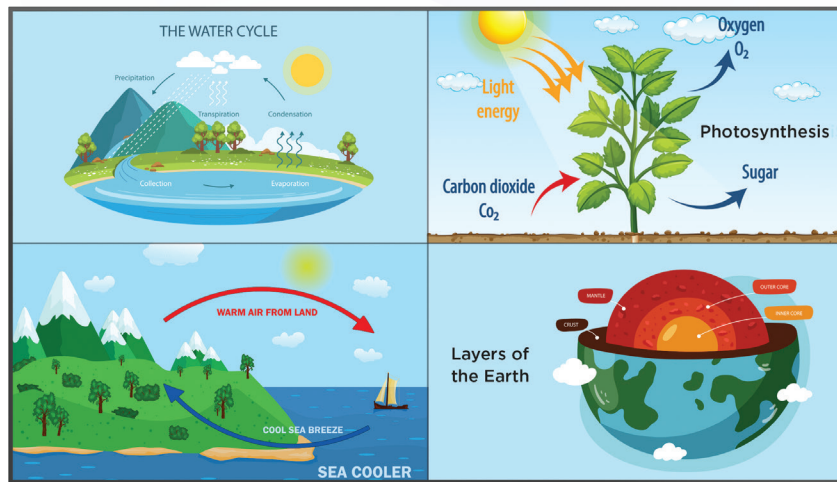
- **Wirelessly share content from any device:** Stream content from Windows, Mac, iOS, Android, and Chromecast devices onto a ViewSonic display. Instant streaming means no valuable meeting time or class time is wasted.

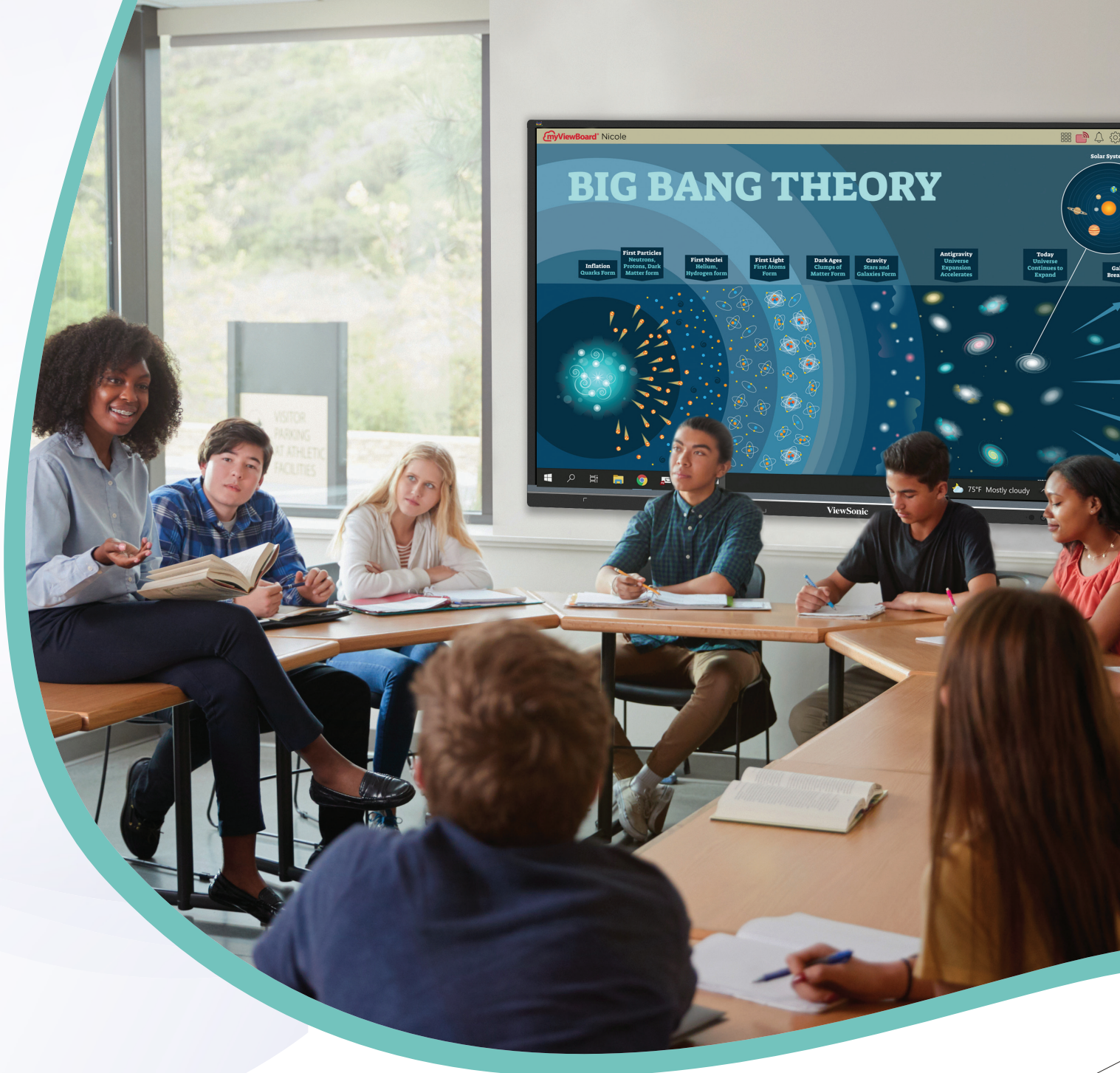


- **Multi-screen sharing:** Up to four users can simultaneously annotate content (such as documents, cloud files, multimedia, etc.) on their devices in real time. That content can then be streamed and shared onto the ViewBoard display via four split screens.

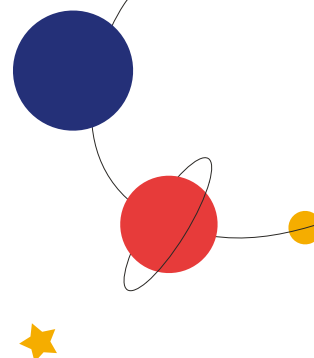


- **Remote touch control:** A host can remotely access and control a presenter's Windows or Mac device via touch control on the ViewBoard display. Touch annotations on the ViewBoard display will then appear on the controlled device.





**Drive Engagement, Energize
and Motivate Students**



ViewBoard Specifications

Model	IFP5550	IFP6550	IFP7550	IFP8650	IFP9850	
Display	Panel Size	55"	65"	75"	86"	98"
	Type/Tech	TFT LCD Module with DLED Backlight, IPS				
	Display Area (mm)	1209.6(H) x 680.4 (V) (54.64" Diagonal)	1428.48(H) x 803.52(V) (64.5" Diagonal)	1650.24(H) x 928.26(V) (74.5" Diagonal)	1913.0(H) x 1084.0 (V) (85.6" Diagonal)	2171.85(H) x 1232.35(V) (97.52" Diagonal)
	Aspect Ratio	16:9				
	Native Resolution	UHD 3840x2160 (Pixels)				
	Colors	1.07B Colors (8 Bit+FRC)				1.07B Colors (10 Bit)
	Brightness	350 Nits (Typ.)				
	Contrast Ratio	1200:1 Typ., 5000:1 Max. (DCR Enabled)				
	Response Time	8ms				
	Viewing Angles	H = 178, V = 178 (Typ.)				
	Backlight Life	50,000 Hours				
	Surface Treatment	Hardness: 7H Mohs Scale/ 9H Pencil Hardness, Anti-Glare Coating				
Platform	Haze	25%				28%
	Orientation	Landscape				
	Processor	Quad core ARM Cortex-A73+Quad core ARM Cortex-A53				ARM Cortex A73*4 (1.8GHz)
	RAM	4GB DDR4				
Touch	Storage	32GB				
	Type/Tech	IR Recognition				
	Touch Resolution	32767 x 32767				
	Touch Point	Windows: 40 Android: 20				20
Input	Response Time	≤10ms				
	Pen Tips Size	2.5mm/8mm				
	HDMI-In	x3				
	RGB/VGA	N/A				x1
	Audio	N/A				x1
	RS232					
HDMI-Out	OPS	x1				
	Audio	x1				x1 (Earphone Out)
SPDIF	RS232	N/A				x1
	LAN	RJ45	x2 (1 In and 1 Out) (10/100/1000M) (USB Type-C 10/100, Android & PC 10/100/1000)			9850: x1
USB	Type-A	6				5
	Type-B	2				
	Type-C	1				
Speakers	12W x 2 + 16W x 1				16Wx2	
Bundle Software	Embedded OS	ViewBoard OS				
	Basic Annotation Software	Whiteboard				
	Wireless Casting	ViewBoard Cast + Display				
Special Features	Remote Device Management	Manager				
	Smart USB Ports	Yes				
	Windows Ink	Yes				
Power	Light Sensor	Yes				
	Voltage	100-240VAC +/- 10% Wide Range				
Wall Mount (VESA*)	Consumption	On: 89W; Off: <0.5W	On: 95W; Off: <0.5W	On: 135W; Off: <0.5W	On: 175W; Off: <0.5W	192.5(Typ.) < 0.5 W ("Off")
	Temperature (°C)	400 x 200	600 x 400	800 x 400	800 x 600	800 x 600
Operating Conditions	Humidity	0°C to 40°C				
		10% - 90% RH Non-Condensing				
Dimensions (W x H x D)	Physical (Inch/mm)	49.9 x 30.4 x 3.3 in/ 1268 x 773 x 85 mm	58.6 x 35.3 x 3.5 in/ 1488 x 897 x 90 mm	67.3 x 40.2 x 3.5 in/ 1710 x 1020 x 90 mm	77.1 x 45.7 x 3.5 in/ 1958 x 1160 x 90 mm	88.4 x 52.1 x 3.6 in/ 2245 x 1323 x 91 mm
	Packaging (Inch/mm)	56.2 x 34.6 x 8.7 in/ 1428 x 878 x 220 mm	65.7 x 39.8 x 8.8 in/ 1669 x 1010 x 223 mm	76.0 x 44.9 x 11.0 in/ 1930 x 1140 x 280 mm	83.6 x 53.0 x 11.0 in/ 2123 x 1345 x 280 mm	97.8 x 58.8 x 14.8 in/ 2483 x 1493 x 376 mm
Weight	Net (lb/kg)	58.2 lb/26.4 kg	89.3 lb/40.5 kg	118.8 lb/53.9 kg	150.8 lb/68.4 kg	228.4 lb/103.6 kg
	Gross (lb/kg)	78.3 lb/35. 5kg	109.6 lb/49.7 kg	158.5 lb/71.9 kg	200 lb/90.7 kg	293.7 lb/133.2 kg
Regulations	VSA:US NRTL w/ CA,FCC,DOE Energy Star,DOE EPEAT					
Low Blue Light (LBL Certificate)	VSA:US NRTL w/ CA, FCC-B w, FCC,DOE Energy Star, DOE EPEAT					
Energy Star Version	Yes					
Package Contents		ES8.0				
	1. 3m Power Cord by Ship Area	1. 3m Power Cord by Ship Area	1. 3m Power Cord by Ship Area	1. 3m Power Cord by Ship Area	1. 3m Power Cord by Ship Area	1. 3m Power Cord by Ship Area
	2. Remote Control with AAA Battery	2. Remote Control with AAA Battery	2. Remote Control with AAA Battery	2. Remote Control with AAA Battery	2. Remote Control with AAA Battery	2. Remote Control with AAA Battery
	3. 3USB touch screen cable	3. USB touch screen cable	3. USB touch screen cable	3. USB touch screen cable	3. USB touch screen cable	3. USB touch screen cable
	4. Touch Pen x2 (VB-PEN-009)	4. Touch Pen x2 (VB-PEN-009)	4. Touch Pen x2 (VB-PEN-009)	4. Touch Pen x2 (VB-PEN-009)	4. Touch Pen x2 (VB-PEN-009)	4. Touch Pen x2 (VB-PEN-009)
	5. Quick Start Guide + Compliance statement	5. Quick Start Guide + Compliance Statement	5. Quick Start Guide + Compliance Statement	5. Quick Start Guide + Compliance Statement	5. Quick Start Guide + Compliance Statement	5. Quick Start Guide + Compliance Statement
	6. RS232 Adapter	6. RS232 Adapter	6. RS232 Adapter	6. RS232 Adapter	6. RS232 Adapter	6. RS232 Adapter
	7. Clamp x5	7. Clamp x5	7. Clamp x5	7. Clamp x5	7. Clamp x5	7. Clamp x5
	8. Camera Plate	8. Camera Plate	8. Camera Plate	8. Camera Plate	8. Camera Plate	8. Camera Plate
	9. Screw x8 (Camera 2+2, Wall Mount x4)	9. Screw x8 (Camera 2+2, Wall Mount x4)	9. Screw x8 (Camera 2+2, Wall Mount x4)	9. Screw x8 (Camera 2+2, Wall Mount x4)	9. Screw x8 (Camera 2+2, Wall Mount x4)	9. Screw x8 (Camera 2+2, Wall Mount x4)
10. HDMI Cable 3m	10. HDMI Cable 3m	10. HDMI Cable 3m	10. HDMI Cable 3m	10. HDMI Cable 3m	10. HDMI Cable 3m	
Compatible Accessories	11. USB Type-C Cable					
	Slot-in PC	VPC2C-W33-01, VPC2C-W33-01-IB, VPC25-W53-01, VPC25-W53-01-IB, VPC25-W53-02, VPC25-W53-02-IB, VPC27-W55-02, VPC27-W55-02-IB				
	WiFi Card	VB-WIFI-001, VSB050				
	Camera	VB-CAM-001, VB-CAM-002, VB-CAM-201, VB-VIS-002, VB-VIS-003				
	Audio	VB-AUD-201				
	Stylus	VB-PEN-009				
	Wall Mount	WMK-047-2				
Wireless Presentation	VB-WPS-001, VB-WPS-003, VB-BOX-001					
Carts	VB-STND-001, VB-STND-002, VB-STND-003, VB-STND-004, VB-STND-005			VB-STND-001, VB-STND-002, VB-STND-004, VB-STND-005		

**With a few simple optional accessories,
your ViewBoard display can become the ultimate integrated solution.**

Mobile Mounting Options

VB-STND-001, VB-STND-002, VB-STND-003, VB-STND-005

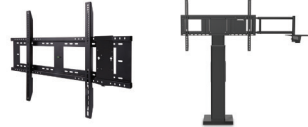
Sturdy rolling carts are certified UL and ADA compliant for safety and accessibility. Select models include motorized lift and tilt features.



Fixed Mounting Options

WMK-047-2, VB-STND-004

Easy-to-install fixed wall mounts and floor stands are certified UL and ADA compliant for safety and accessibility.



Windows® Slot-in PCs market ready ✓

VPC Series

Provides additional computing power, touch functionality, and storage



Chromebox

NMP760

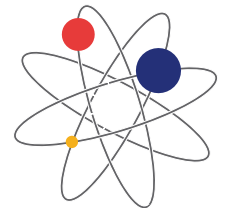
Delivers a familiar, easy-to-use Google interface for creating, saving, and sharing content



Wireless Internet Module

VB-WIFI-001

Delivers faster Wi-Fi and support for Bluetooth 5.2



Webcams and Speakerphones

VB-AUD-001

Conference speakerphone with 360 degrees sound and four integrated microphone arrays



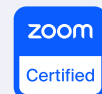
VB-CAM-002

1080p USB camera with built-in camera and privacy lens



VB-CAM-201

4K UHD Ultra-wide camera with speaker and four-microphone array with noise and echo cancellation



VB-VIS-002

8-megapixel USB document camera with microphone





For more information contact your ViewSonic representative today.

ViewSonic Sales: (909) 444-8964 or salesinfo@viewsonic.com

Microsoft and the Microsoft logo are trademarks or registered trademarks of the Microsoft group of companies in the United States and/or other countries. The Android™ robot logo is a trademark of Google Inc. and is in no way affiliated with ViewSonic.

Program, pricing, specifications and availability are subject to change without notice. Corporate names and trademarks stated herein are the property of their respective companies. Copyright © 2023, ViewSonic Corporation. All rights reserved. [23VWB-EDU1211]



ViewSonic®

Education